

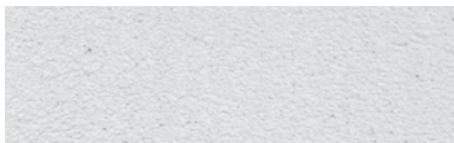


Perma-Flex DPR Acrylic Finishes

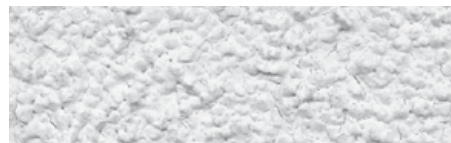
Smooth **Coarse**
Fine **Swirl Fine**
Medium **MaxTex**

Test	Method	Criteria	Results
Abrasion Resistance*	ASTM D968	No cracking or loss of film integrity at 528 quarts (500 L) of sand	Pass @ 1000 Liters
Accelerated Weathering	ASTM G153 (Formerly ASTM G23)	No deleterious effects at 2000 hours when viewed under 5x magnification	Pass
Flexibility (Mandrel Bend)	ASTM D522, Method B	No Requirement	1" Diameter at -4°F
Freeze/Thaw Resistance*	ASTM E2485	No deleterious effects at 10 cycles when viewed under 5x magnification	Pass @ 60 Cycles
Mildew Resistance*	ASTM D3273	No growth supported during 28 day exposure period	Pass @ 35 Days
Mildew Resistance*	MIL 810 B508		No Growth 28 Days
Moisture Resistance*	ASTM D2247	No deleterious effects at 14 day exposure	Pass @ 28 Days
Salt Fog Resistance*	ASTM B117	No deleterious effects at 300 hours	Pass @ 900 Hours
Scrub Resistance	ASTM D2486	No Requirement	Pass @ 10,000 Cycles
Surface Burning Characteristics	ASTM E84	Individual components shall each have a flame spread <25, and smoke developed < 450	Flame Spread: 0 to 15 Smoke Developed: 0 to 15
Water Vapor Transmission	ASTM E96 Procedure B	Vapor Permeable	Permeable
VOC	EPA Reference Test Method 24	US EPA, South Coast AQMD and Greenseal Standard	8 g/L

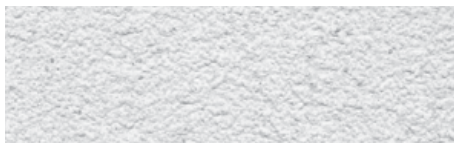
*Tested with El Rey Basecoat



SMOOTH



COARSE



FINE



SWIRL FINE



MEDIUM



MAXTEX

DESCRIPTION

- 100% acrylic-based textured finish
- Dirt Pick-up Resistance (DPR): The surface of the finish hardens and does not soften again under heat. The non-tacky surface provides high resistance to accumulation of dirt, mold, and pollutants.
- Integrally colored with high-quality pigments
- Exceeds ASTM and ICC Acceptance Criteria

USES:

- Exterior or interior finish coat over:
- El Rey Insul-Flex EIFS
 - Properly prepared masonry, stucco, and concrete surfaces
 - Interior application over drywall, plaster, or properly prepared masonry or concrete

COMPOSITION:

- Binder base: 100% acrylic polymer with surface-hardening property.
- Aggregate: Pure crushed marble, rust-free.
- Water-based: VOC-compliant
- Pigment base: Titanium dioxide.
- Color: Parex USA standard colors or tinted to desired custom color. Meets SCAQMD Rule 1113 when using Parex USA Non-VOC Colorants.

DRYING TIME:

24-48 hours under normal conditions. High humidity and low temperatures extend drying time.

CLEAN-UP:

Water-soluble prior to drying. Clean tools and containers with water prior to drying.

COVERAGE:

Depending on the condition of the substrate and method of application, approximate coverages per pail are:

Smooth

Aggregate size: 0.25mm
130–140 ft² (12.1–13 m²)

Fine

Aggregate size: 0.5mm
130–140 ft² (12.1–13 m²)

Medium

Aggregate size: 1.0mm
120–130 ft² (11.1–12 m²)

Coarse

Aggregate size: 1.5mm
80–100 ft² (7.4–9.3 m²)

Swirl Fine

Aggregate size: 1.5mm
100–120 ft² (9.3–11.1 m²)

MaxTex

Aggregate size: 1.25mm
110–120 ft² (10.2–11.1 m²)
Coverage varies due to texture.

CONTAINER:

60 lb (27.2 kg) net weight in plastic pails.

- Storage: Protect from direct sunlight and freezing at all times.
- Do not stack pails more than 3 pails high
- Shelf life: Reference Parex USA Expiration Date of Products Technical Bulletin.

SURFACE PREPARATION:

- Remove surface contaminants such as dust or dirt without damaging the substrate.
- For previously painted surfaces, all loose and chalking paint must be removed, and glossy surfaces dulled.
- Portland Cement Plaster must be clean and cured a minimum of 7 days or in accordance with El Rey Fastwall Specifications.
- New concrete and masonry must be clean and cured a minimum of 28 days.
- Check concrete surfaces for alkalinity and treat. Any form-release agents or bond breakers must be removed.
- Uneven concrete or masonry can be leveled with a El Rey Insul-Bond Basecoat & Adhesive, Parex USA Stucco Level Coat, or other suitable, compatible product.
- It is recommended that El Rey Perma-Flex 400 Surface Conditioner be applied to all portland cement-based substrates before applying acrylic stucco finish.

Prior to commencing work, always apply a small jobsite sample to check color and texture.

- For interior drywall, prepare as for painting. Minimum level 3 drywall finish.
- Parex USA recommends the use of primers to enhance the appearance and uniformity of the finish, improved coverage, and decrease the chance of efflorescence. This is especially true when using dark colors or finishes with a large aggregate. If specified, prime with Parex USA Primer or Variance VariPrime Sanded, refer to Product Data Sheet
- For additional options, contact Parex USA Technical Support.

MIXING:

- Use clean equipment for mixing and preparation.
- Stir to obtain a homogeneous consistency using a heavy-duty 1/2-in. (13mm) drill with a rust free paddle at 400–500 rpm. Avoid air entrainment.
- If not pre-tinted, add liquid color to the pail of finish. Make sure all of the color is added by rinsing out the color vial with water (1/3 of the vial's volume) into the pail.
- Add the amount of water needed to achieve finish texture. To avoid color variations, add the same amount of water to each pail of finish as up to 16 oz (0.5 L).

APPLICATION:

- Read the entire label before using this product.
- Always maintain a wet edge and work to corners or joints. For best color consistency, use finish with the same batch number within a wall section. For more information, see Technical Bulletin: "Boxing Acrylic Finishes".
- Keep container closed when not in use.
- Use a clean stainless steel trowel and apply a uniform coat the thickness of the largest aggregate size of the finish.
- Texturing Swirl Fine, Fine, Medium, MaxTex and Coarse Finishes: Use a clean plastic float or stainless steel trowel. A plastic float will roll the large aggregates more than a stainless steel trowel. Continuously dry clean the plastic float or steel trowel while texturing. Use consistent pressure and motion to achieve the desired texture.

■ Texturing Smooth Finish:

- Optional: Level stucco brown coats with any El Rey Insul-Bond Basecoat & Adhesive, Level Coat, or other suitable, compatible product and let dry prior to finish application.
- Smooth Finish cannot generally be floated. Texture will be "as trowelled."
- Smooth Finish can be trowelled smooth to simulate the texture of limestone.
- For smoothest application, apply in two tight coats. Allow first coat to dry enough that it will not be disturbed during application of the second coat. When second coat is partially dry, trowel to desired smoothness. Light, consistent misting with water during smoothing will increase smoothness. Variations in color tint and smoothness should be expected.
- Spray application: To achieve consistent texture, spray application must use consistent motion, pressure, distance and spray angle. A job-site mock up for spray application is advised.

LIMITATIONS:

- Ambient and surface temperature must be 40°F (4.4°C) or higher during application and drying time. Provide supplemental heat and protection from precipitation as needed.
- Use only on surfaces that are sound, clean, dry, unpainted, and free from any residue that might affect the ability of the finish to bond to the surface.
- Application in direct sunlight in hot weather may adversely affect aesthetics.
- Parex USA is not responsible for color correctness after finish has been applied.

WARNING

- Read complete Warning information printed on product container prior to use. For medical emergency information, call 1-800-424-9300.
- For more information on handling this product refer to its Safety Data Sheet (SDS). The most current SDS and Product Data Sheet (PDS) can be found on our website.
- This Product Data Sheet has been prepared in good faith on the basis of information available at the time of publication. It is intended to provide users with information about the guidelines for the proper use and application of the covered product(s) under normal environmental and working conditions. Because each project is different, Parex USA, Inc. cannot be responsible for the consequences of variations in such conditions, or for unforeseen conditions.

Parex USA, Inc.
4125 E. La Palma Ave., Suite 250
Anaheim, CA 92807
(866) 516-0061 Tech Support: (800) 226-2424

Facilities
French Camp, CA
North Hollywood, CA
Riverside, CA
San Diego, CA

Colorado Springs, CO
Haines City, FL
Duluth, GA
Redan, GA

Albuquerque, NM
Allentown, PA
San Antonio, TX

